

***Risk based approach
Cleansing
From April 2022***



Our New Approach

To achieve more cleansing activity per public pound by moving from a reactive to a proactive risk-based service.

- Historically we have prioritised cyclical cleansing on our Strategic and Locally important routes and cleansed all other drains on an ad hoc basis following reports from members of the public.
- We have adopted a risk-based approach, following the Well Managed Highway infrastructure and our approach to Asset Management of the Highway.
- We have been reviewing our service to look at what we can do differently to help reduce flooding, we have now plotted every drain in Kent to enhance our asset inventory, and improve customer service across the County.
- Our new approach considers many factors attaining to various risks across the highway network such as road hierarchy, speed limit or whether it is a known flood zone. These factors combined will produce individual risk weightings for every asset.
- Maintaining over 250,000 highway drains across the county we now aim to cleanse all highway drains on a countywide programme every 2 years.

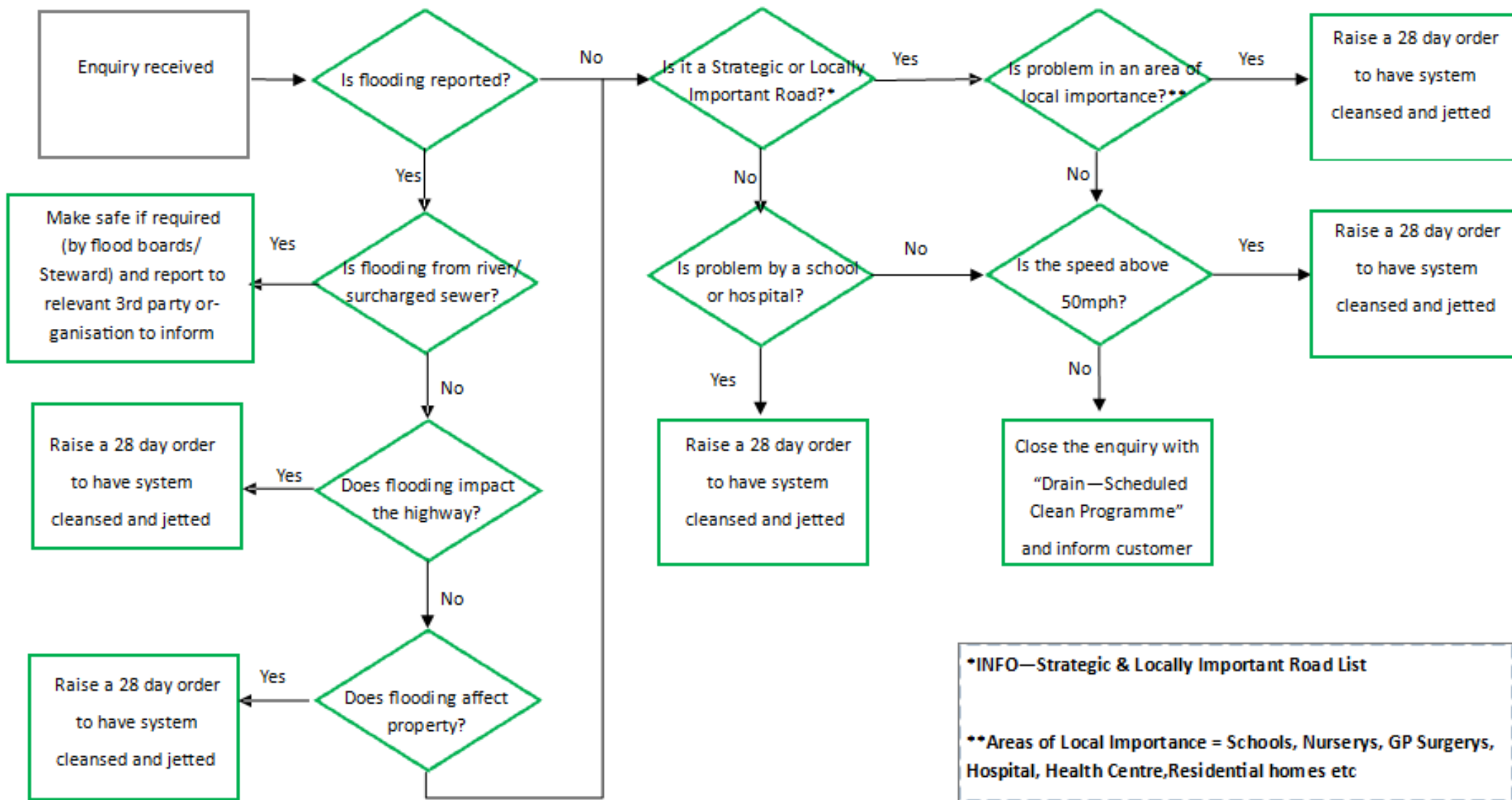


Our New Approach

- The risk scores that are produced for each individual asset will influence the frequency in which drains are cleaned, these frequencies being 6 monthly, yearly or every 2 years.
- Our new approach will see circa 170,000 drains cleansed per annum.
- Customer enquiries will be risk assessed following a criteria set in place. Reactive works will still be carried out on an ad hoc basis where this meets intervention
- We will still respond to emergencies, carry out CCTV surveys and maintain other vital assets such as soakaways.
- Customers will soon be able to check when their gully is due to be cleaned via our online fault reporting tool which should improve customer satisfaction.



Dynamic Risk Assessment – the team will use to determine cleansing



New Process & Risk Assessments

Reactive maintenance historically contributed to a high percentage of the cleansing activity on the network and moving to a proactive approach requires a shift in mindset.

Now we have more data available we should now look at the information gathered about the assets and assess if a reactive call out is necessary.



Cyclical
Cleansing



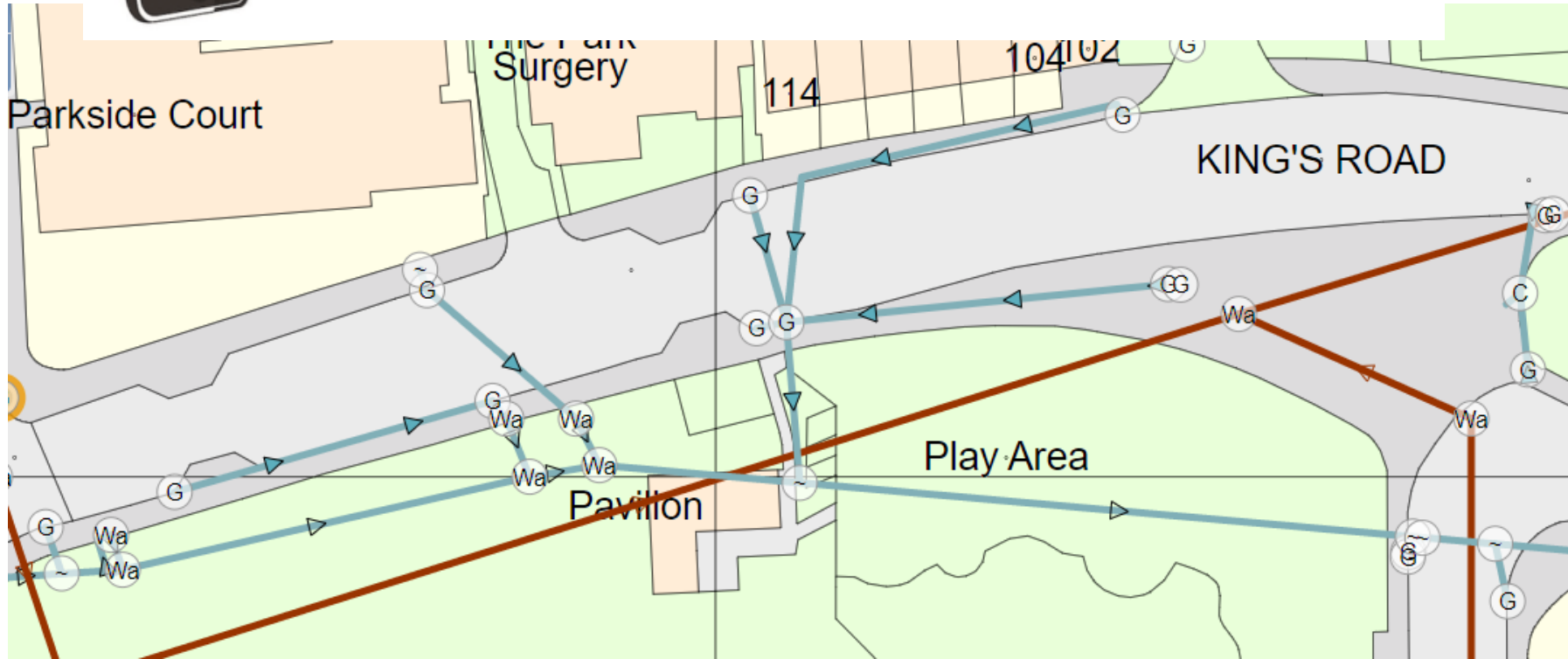
Customer
Enquiries to
be Risk
Assessed



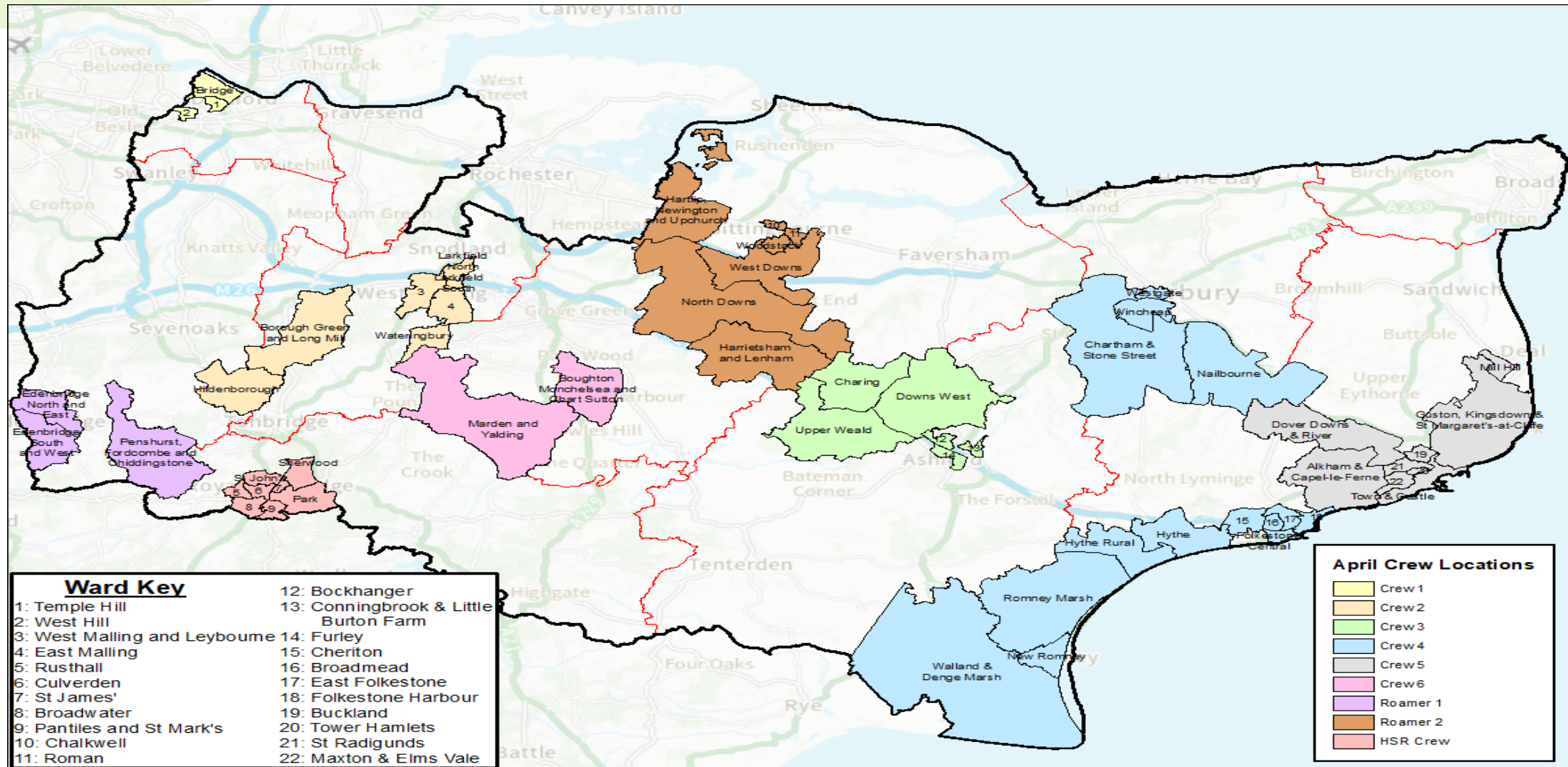
Further Works

KaarbonTech

ASSET MANAGEMENT

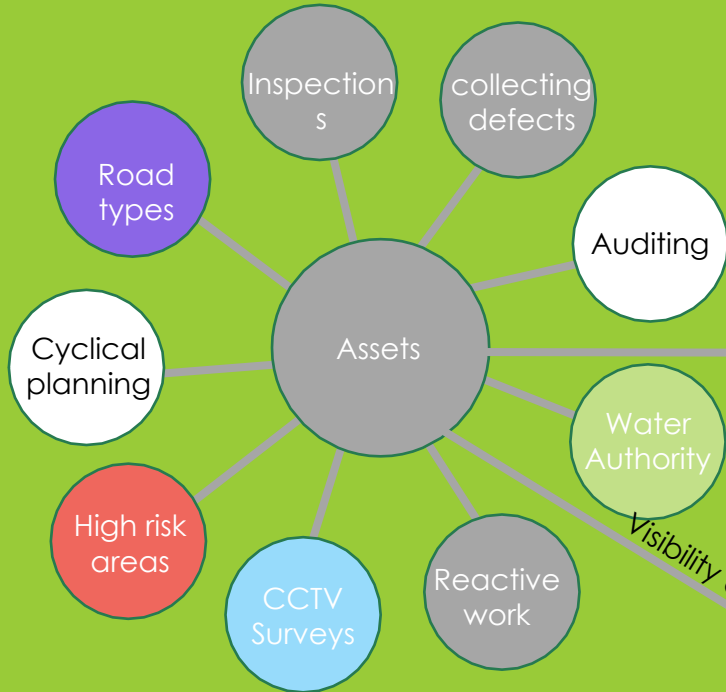


Proactive cleansing programme for April 13,000 drains to be cleansed



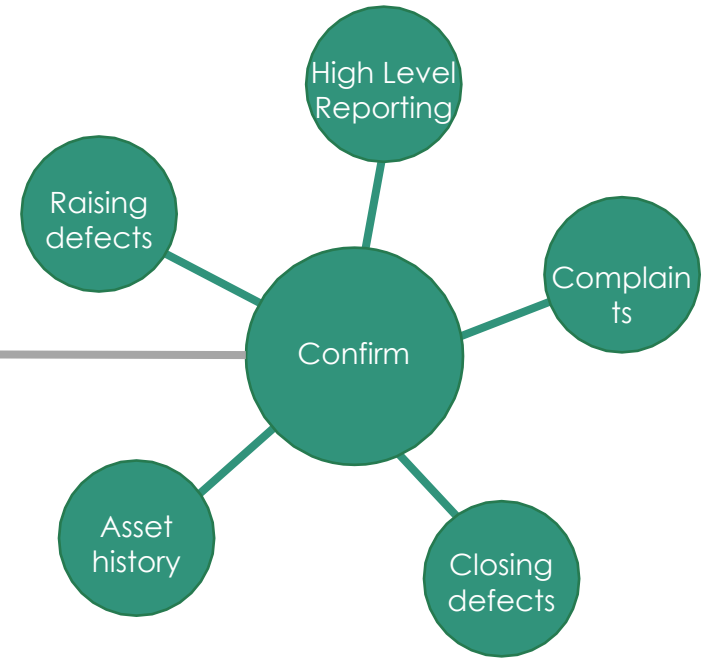
Various systems now link all information back into Confirm

KaarbonTech



Visibility and automatic communication

Confirm



Visibility and automatic communication



What does these mean for Swale

In total, there are 23,000 Gullies across the Swale Borough.

The 22-23 programme will perform 15256 cleans in the Swale which represents 63% of the network inventory.

The majority of the remainder is the biennial being completed next year.

By gully numbers this financial year 2020/2023

- **9335** annual - all being visited
- **13187** biennial – 4823 being visited
- **549** six monthly – all being visited twice

What does these mean for Swale

	Six Monthly	Annual	Biennial	Total
Apr-22	56	181	0	237
May-22	19	648	1032	1699
Jun-22	3	576	1060	1639
Jul-22	102	721	848	1671
Aug-22	185	1451	116	1752
Sep-22	184	1099	511	1794
Oct-22	77	1112	452	1641
Nov-22	66	1392	301	1759
Dec-22	51	1332	0	1383
Jan-23	355	823	503	1681
Feb-23	0	0	0	0
Mar-23	0	0	0	0
Total	1098	9335	4823	15256

What does these mean for Swale

Any Questions ?